

# Discovery Harbour, Penetanguishene

Wednesday, June 13<sup>th</sup>, 2018 .... Meet at Discovery Harbour for a tour start of 1100 hours

## A NAVAL & MILITARY PAST

Discovery Harbour traces its roots back to the original British naval and military base in Penetanguishene, built to safeguard access to Upper Canada after the War of 1812. "His Majesty's Naval Establishment on Lake Huron", (as it was first called) kept ships prepared to supply British posts to the northwest. By 1820, it was home to over 70 people, including sailors, officers, shipwrights, and soldiers. Five large ships, 15 smaller vessels, and numerous workshops and dwellings were built.

In 1828, a British garrison on Drummond Island was relocated to Penetanguishene. By 1834, Canada was defended exclusively by these forces. An impressive stone Officers' Quarters was built in 1845. The military occupied the site until 1856.

## *Proud partners of Huronia Historical Parks*

### CONTACT INFORMATION

Discovery Harbour  
93 Jury Drive  
Penetanguishene, Ontario L9M 1G1  
Tel: (705) 549-8064  
Fax: (705) 549-4858  
TTY (Text telephone): (705) 528-7697

2018

Open 20 May – 3Sep  
1000-1700

Srs \$6.25  
Adults \$7.00  
Audio Wand rental \$3.00

Near St. Marie Among the  
Hurons

### Audio Wand Rental:

\$3.00 per person (includes detailed audio tour of site in choice of English, French, German or Spanish).

Audio wands are free of charge during the Spring and Fall seasons.

Site maps are available in English and French. Guided tours of the historic site are available in English and French and are recommended. Please inquire about our family and group rates.

We accept Visa, MasterCard, American Express and Interact. U.S. dollars exchanged at current rates.

## HOW TO FIND US

### Coming from Toronto

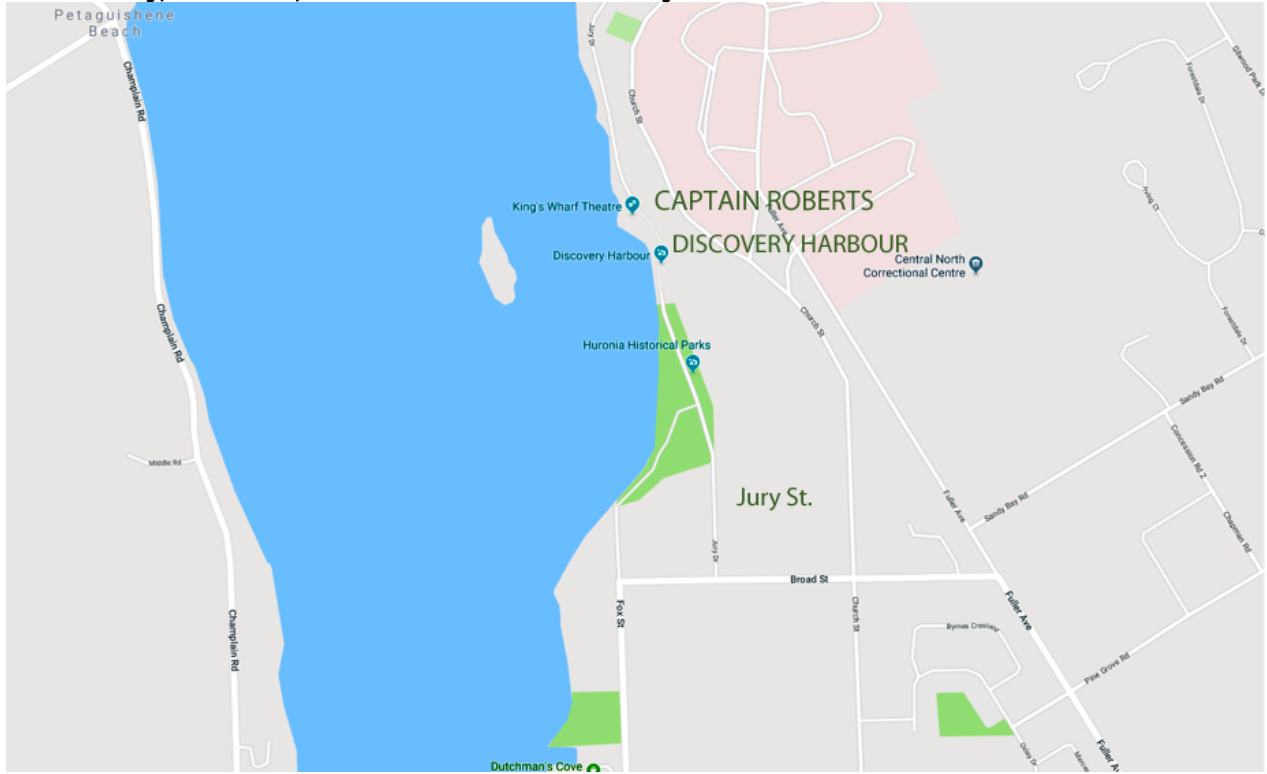
Follow Hwy. 400 North to Hwy. 93. Take Hwy. 93 north directly to Penetanguishene (Hwy 93 turns into Penetanguishene's main street). Take the main street to the bottom of the hill towards the water, turn right and follow the Blue Ship logos to Discovery Harbour.

Contact Dianne Leggatt if you wish to join us ...

[dianne.leggatt@gmail.com](mailto:dianne.leggatt@gmail.com) **OR** 416 486 6025 (Leave a message if I am not available, please.)

## Discovery Harbour, Penetanguishene

**Wednesday, June 13<sup>th</sup>, 2018 .... Meet at Discovery Harbour for a tour start of 1100 hours**



## DISCOVERY HARBOUR

**Lunch at ~1300 hours at**  
**CAPTAIN ROBERTS (PART OF KINGS WARF THEATRE)**  
 93 Jury Drive  
 Penetanguishene, Ontario  
 (705) 549-0713



**Click on [CAPTAIN ROBERTS/facebook](#) to see the menu online.**



Contact Dianne Leggatt if you wish to join us ...

[dianne.leggatt@gmail.com](mailto:dianne.leggatt@gmail.com) **OR** 416 486 6025 (Leave a message if I am not available, please.)